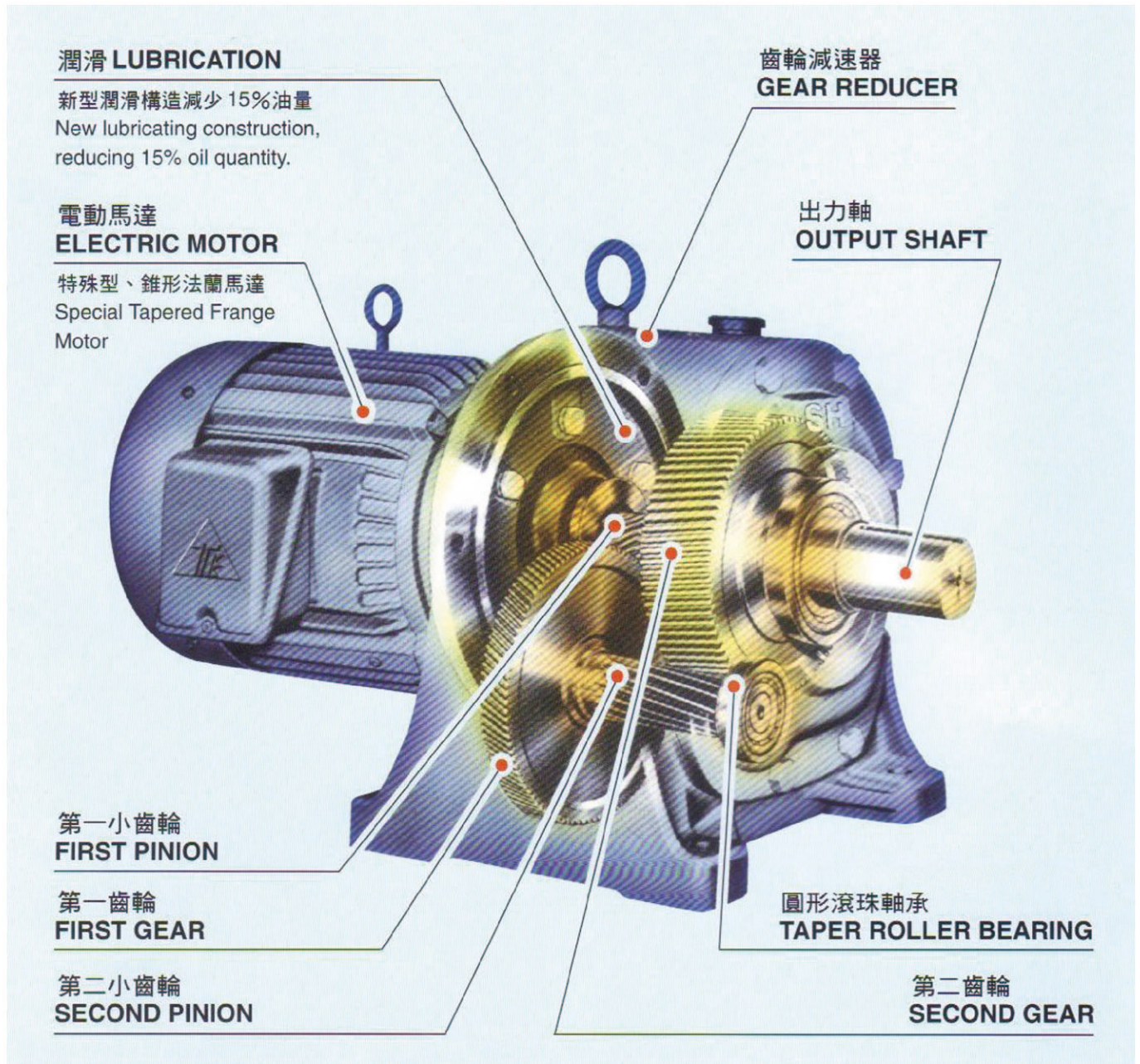




參 . 強力型減速馬達

## YG Series 齒輪馬達減速機 Helical Motor Speed Reducer



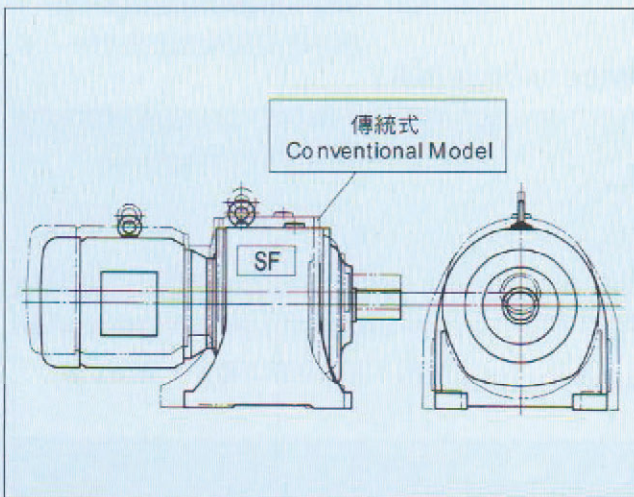
另附入力法蘭型式 ( 自插馬達 )



高功率傳輸效率：一次減速為 98% ，二次減速為 97%  
 High Power Transmission Efficiency :  
 98% ; For Single Reduction, 97% For Double Reduction.

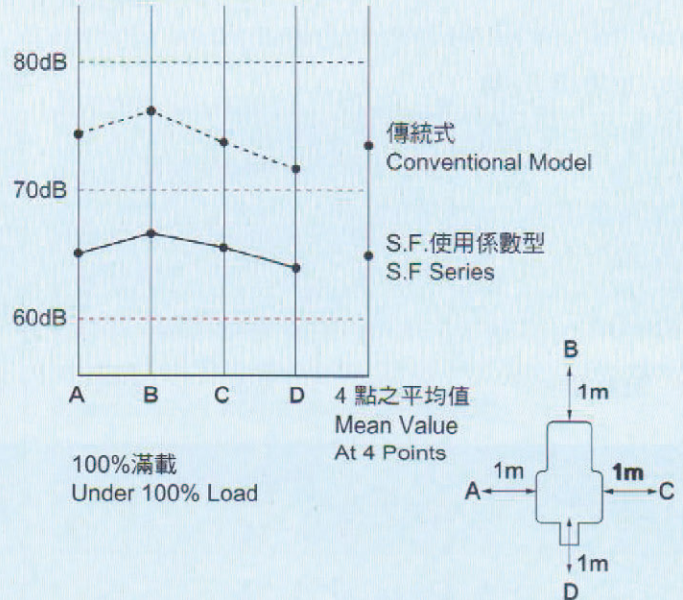
- |                  |                                    |
|------------------|------------------------------------|
| (1) 堅固重量輕        | (1) Compact and Light Weight       |
| (2) 操作順利而安靜      | (2) Smooth & Quiet Operation       |
| (3) 耐久 AGMA 2 定額 | (3) Long Life AGMA II Rating       |
| (4) 有效潤滑         | (4) Effective Lubrication          |
| (5) 構造簡單而牢固      | (5) Simple and Sturdy Construction |

### 尺寸比較 COMPARISON IN SIZE



比傳統式減少 20% 重量及 30% 之安裝空間  
 Compared with the conventional model 20% less in weight  
 and 30% smaller in installation area

### 噪音比較 NOISE COMPARISON





### 如何選擇定格馬力與型號

### How To Select Rated HP And The Type

#### [ 選擇例 ]

1. 理論馬力：10 HP
2. 出力轉速：58 R.P.M.
3. 使用狀況：普通負荷 24 小時操作
4. 使用馬達：60Hz/4 極 /1750R.P.M

#### [ EXAMPLE ]

- 1.Theoretical Horsepower : 10HP
- 2.Output Revolutions : 58 R.P.M.
- 3.Use Condition : Operation under normal load for 24 hours.
- 4.Motor used : 4 poles, 1750 R.P.M.

#### [ 解 ]

#### [ SOLUTION ]

計算值：

$$\text{減速比} = \frac{58}{1750} \div \frac{1}{30}$$

定格馬力 (HP) = 理論馬力 (HP) x S.F.

S.F. = 使用係數

使用係數 S.F. = 1.5

減速機定格馬力 (HP) = 10 X 1.5 = 15HP

CALCULATION VALUE

$$\text{Reducing Ratio} = \frac{58}{1750} \div \frac{1}{30}$$

Ratio HP = Theoretical HP x S.F.

S.F. = Service Factor

S.F. = 1.5

Rated HP of speed reducer = 10 x 1.5 = 15hp

● 由下表可選用型號為 SF-65 型

● From the list below, we know our choice will be WLH - 65 Model.

使用係數表 (S.F. 值)

負荷狀況	每日使用時間 (小時)		
	8 以下	8~16	16~24
圓滑載荷 (1)	0.8	1.0	1.25
普通載荷 (2)	1.0	1.25	1.5
衝擊載荷 (3)	1.25	1.5	1.75

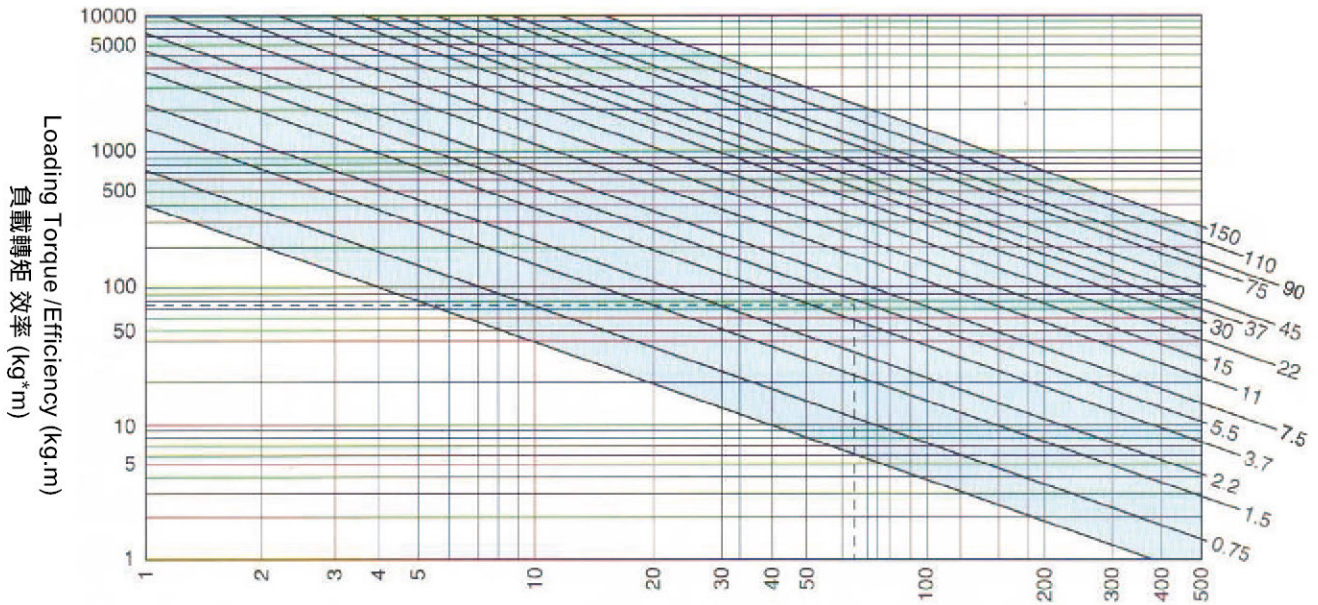
SERVICE FACTOR(S.F.)

LOAD CONDITION	每日使用時間 (小時)		
	8 以下	8~16	16~24
SMOOTH LOAD	0.8	1.0	1.25
NORMAL LOAD	1.0	1.25	1.5
IMPACT LOAD	1.25	1.5	1.75



## 馬達 KW/HP 之選定表

## Choise Table Of Motor KW/HP



標準回轉數 Standard Rotation: (50Hz)33, 50, 75, 150 (60 Hz) 40, 60, 90, 180  
齒輪馬達輸出軸回轉速 (rpm) (低轉軸) R.P.M. of output Shaft (Low speed)

1. 本選定表係依標準馬達 (低壓三相鼠籠型感應電動機, E 級絕緣) 使用而言, 對於起動頻繁, 變動負載等特殊條件者不在此限。
2. 馬達所需 KW =  $\frac{\text{必要負載轉矩}}{\text{減速機效率}}$
3. 減速機效率二段式為 95%, 三段式為 92% 矩計。
4. 必需負載轉矩如為變動負載以其等值轉矩表示之, 如負載變動循環不明時, 以最大轉。
5. 一般對於起動轉矩不予考慮。

1. This table is based on service of standard motors (low pressure, 3 phase, rat-cage type induction motor, Egrade insulation), not applicable for frequent startings, variable loads and such special requirements.
2. MOTOR KW =  $\frac{\text{Necessary negative load turning moment}}{\text{Efficiency of speed reducer}}$
3. Efficiency of speed reducer: 95% for two-sections, 92% for 3 section.
4. Necessary negative load turning moment : to be indicated by its equivalent turning moment for variable load variation.
5. Normally, starting turning moment will not be considered.

例：於 60Hz 地區, 所需低速回軸回轉速為 60 rpm 最大轉矩為 70 kg-m。

Example : In an area of 60Hz, required low-speed shaft revolution is 60 rpm, while the maximum turning moment is 70 kg-m.

$$\frac{\text{負載轉矩}}{\text{效率}} = \frac{70}{0.95} = 73.7\text{kg-m}$$

$$\frac{\text{Negative load turning moment}}{\text{Efficiency}} = \frac{70}{0.95} = 73.7\text{kg-m.}$$

● 負載轉矩 73.7 kg-m 之橫線與 60 rpm 之垂直線之交點, 可得知馬達使用 5.5KW。

● On the intersection of horizontal line for negative turning moment of 73.7 kg-m with the vertical line of 60 rpm, we know 5.5 KW will be used for the motor.

計算值：

CALCULATION VALUE

$$\text{馬達 KW} = \frac{T \times N}{974} = \frac{73.7 \times 60}{974} = 4.6\text{KW}$$

$$\text{MOTOR KW} = \frac{T \times N}{974} = \frac{73.7 \times 60}{974} = 4.6 \text{ KW.}$$

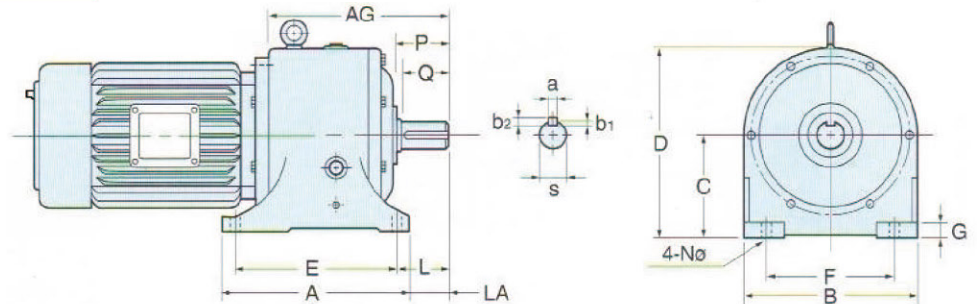
$$\text{馬達 HP} = \frac{T \times N}{716.2} = \frac{73.7 \times 60}{716.2} = 6.17\text{HP}$$

$$\text{MOTOR HP} = \frac{T \times N}{716.2} = \frac{73.7 \times 60}{716.2} = 6.17 \text{ HP.}$$



參 . 強力型減速馬達

## YGE 型橫式齒輪馬達減速機 YGE Type Gear Motor Speed Reducer

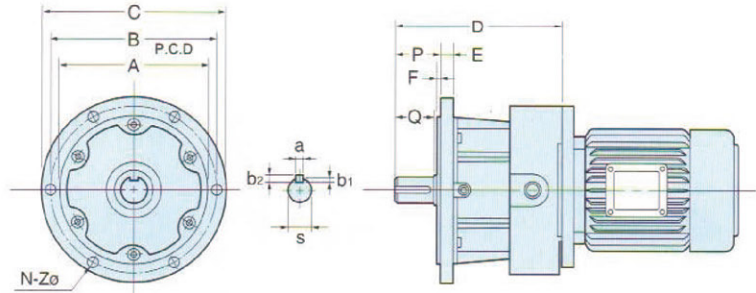


尺寸表 (MEASUREMENTS):

單位 (Unit) : m/m

減速比 Reducing Ratio	馬力 HP		型號 Mode YGE	A	AG	B	C	D	L	E	G	F	LA	N	軸端 SHAFT END					
	4P	6P													S	A	b1	b2	P	Q
1/5	1/4		25	195	176	205	110	200	62	155	20	150	40	11	25	7	4	7	54	45
	1/2	1/4	25	195	176	205	110	200	62	155	20	150	40	11	25	7	4	7	54	45
	1	1/2	30	240	217	233	120	225	65	200	25	170	40	13	30	7	4	7	60.5	55
	2	1	35	240	222	233	120	225	65	200	25	170	45	13	35	10	4.5	8	65.5	60
	3	2	40	265	248	260	135	255	71	230	27	190	50	13	40	10	4.5	8	70.5	65
1/20	5	3	45	290	265	295	155	290	75	240	28	220	50	15	45	12	5.5	10	75.5	70
	7-1/2	5	50	312	301	340	175	330	80	270	30	270	60	15	50	12	5.5	10	85.5	80
	10	7-1/2	55	360	338	390	205	380	106	300	32	310	78	18	55	15	6.5	12	95.5	90
	15	10	65	395	361	425	240	435	103	340	35	330	80	18	65	18	6.5	12	105.5	100
	20	15	75	445	382	480	265	485	112	380	38	370	80	21	75	20	7	13	120.5	115
1/21	30	20	90	495	438	530	295	540	148	430	40	420	120	21	90	24	8.5	16	145.5	140
	40	30	100	540	540	600	340	610	222	470	43	480	187	24	100	28	8.5	16	170.5	165
	1/4		25	195	176	205	110	200	62	155	20	150	40	11	25	7	4	7	54	45
	1/2	1/4	25	195	176	205	110	200	62	155	20	150	40	11	25	7	4	7	54	45
	1	1/2	35	240	222	233	120	225	68	200	25	170	45	13	35	10	4.5	8	65.5	60
1/30	2	1	40	265	248	265	135	255	71	230	27	190	50	13	40	10	4.5	8	70.5	65
	3	2	45	284	265	295	155	290	75	240	28	220	50	15	45	12	5.5	10	75.5	70
	5	3	50	312	301	340	175	330	80	270	30	270	60	15	50	12	5.5	10	85.5	80
	7-1/2	5	55	360	338	390	205	380	106	300	32	310	78	18	55	15	6.5	12	95.5	90
	10	7-1/2	65	395	361	425	240	435	103	340	35	330	80	18	65	18	6.5	12	105.5	100
1/31	15	10	75	445	382	480	265	485	112	380	38	370	80	21	75	20	7	13	120.5	115
	20	15	90	495	438	530	295	540	148	430	40	420	120	21	90	24	8.5	16	145.5	140
	30	20	100	540	540	600	340	610	222	470	43	480	187	24	100	28	8.5	16	170.5	165
	1/4		25	203	197	200	110	200	62	155	20	150	40	11	25	7	4	7	54	45
	1/2	1/4	25	203	197	200	110	200	62	155	20	150	40	11	25	7	4	7	54	45
1/60	1	1/2	35	255	245	230	120	225	75	200	25	170	45	13	35	10	4.5	8	65.5	60
	2	1	40	273	264	265	135	255	73	230	27	190	50	13	40	10	4.5	8	70.5	65
	3	2	45	290	290	295	155	290	75	240	28	220	55	15	45	12	5.5	10	75.5	70
	5	3	50	333	326	340	175	330	91	270	30	270	60	15	50	12	5.5	10	85.5	80
	7-1/2	5	55	364	356	390	205	389	95	300	32	310	74	18	55	15	6.5	12	95.5	90
1/61	10	7-1/2	65	395	383	425	240	435	103	340	35	330	80	18	65	18	6.5	12	105.5	100
	15	10	75	445	417	480	265	485	112	380	38	370	80	21	75	20	7	13	120.5	115
	20	15	90	495	473	535	295	540	148	430	40	420	120	21	90	24	8.5	16	145.5	140
	30	20	100	540	595	600	340	610	222	470	43	480	187	24	100	28	8.5	16	170.5	165
	1/4		25	203	197	200	110	200	62	155	20	150	40	11	25	7	4	7	54	45
1/120	1/2	1/4	35	258	245	230	120	225	75	200	25	170	45	13	35	10	4.5	8	65.5	60
	1	1/2	40	273	264	265	135	225	73	230	27	190	50	13	40	10	4.5	8	70.5	65
	2	1	45	290	290	295	155	290	75	240	28	220	55	15	45	12	5.5	10	75.5	70
	3	2	50	333	326	340	175	330	91	270	30	270	60	15	50	12	5.5	10	85.5	80
	5	3	55	364	356	390	205	389	95	300	32	310	74	18	55	15	6.5	12	95.5	90
1/120	7-1/2	5	65	390	383	425	240	435	103	340	35	330	80	18	65	18	6.5	12	105.5	100
	10	7-1/2	75	445	417	480	265	485	112	380	38	370	80	21	75	20	7	13	120.5	115
	15	10	90	495	473	535	295	540	148	430	40	420	120	21	90	24	8.5	16	145.5	140
20	15	100	540	595	600	340	610	222	470	43	480	187	24	100	28	8.5	16	170.5	165	

## YGV 型立式齒輪馬達減速機 YGV Type Gear Motor Speed Reducer



### 尺寸表 (MEASUREMENTS):

單位 (Unit) : m/m

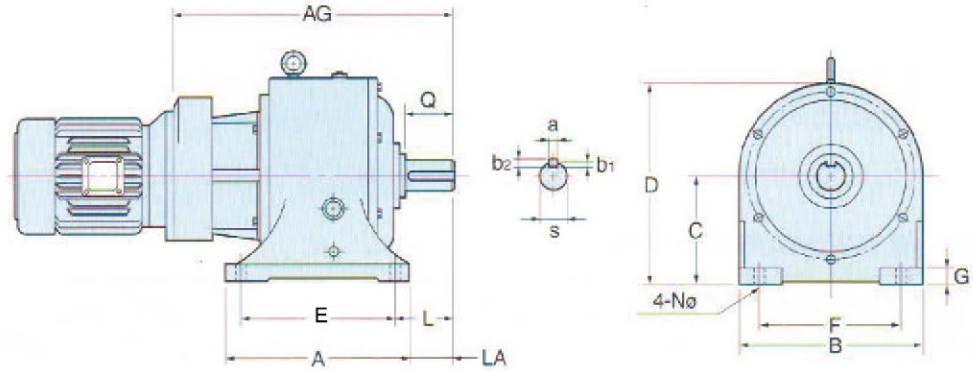
減速比 Reducing Ratio	馬力 HP		型號 Mode YGV	A	B	C	D	E	F	N	Z	軸端 SHAFT END					
	4P	6P										s	a	b1	b2	p	Q
1/5	1/4		25	170	190	210	178	10	2.5	6	11	25	7	4	7	54	45
	1/2	1/4	25	170	190	210	178	10	2.5	6	11	25	7	4	7	54	45
	1	1/2	30	200	225	250	221.5	12	3.5	6	11	30	7	4	7	60.5	55
	2	1	35	200	225	250	221.5	12	3.5	6	13	35	10	4.5	8	65.5	60
	3	2	40	230	255	280	245.5	13	3.5	6	13	40	10	4.5	8	70.5	65
1/20	5	3	45	260	290	325	260.5	15	3.5	6	15	45	12	5.5	10	75.5	70
	7-1/2	5	50	290	320	350	300.5	15	4.5	6	15	50	12	5.5	10	85.5	80
	10	7-1/2	55	340	375	410	330.5	17	4.5	6	18	55	15	6.5	12	95.5	90
	15	10	65	380	420	460	355.5	18	4.5	6	18	65	18	6.5	12	105.5	100
	20	15	75	430	470	510	385.5	20	4.5	6	21	75	20	7	13	120.5	115
1/21	30	20	90	480	520	560	450.5	20	4.5	6	21	90	24	8.5	16	145.5	140
	1/4		25	170	190	210	178	10	2.5	6	11	25	7	4	7	54	45
	1/2	1/4	25	170	190	210	178	10	2.5	6	11	25	7	4	7	54	45
	1	1/2	35	200	225	250	221.5	12	3.5	6	13	35	10	4.5	8	65.5	60
	2	1	40	230	255	280	245.5	13	3.5	6	13	40	10	4.5	8	70.5	65
1/30	3	2	45	260	290	325	260.5	15	3.5	6	15	45	12	5.5	10	75.5	70
	5	3	50	290	320	350	300.5	15	4.5	6	15	50	12	5.5	10	85.5	80
	7-1/2	5	55	340	375	410	330.5	17	4.5	6	18	55	15	6.5	12	95.5	90
	10	7-1/2	65	380	420	460	355.5	18	4.5	6	18	65	18	6.5	12	105.5	100
	15	10	75	430	470	510	385.5	20	4.5	6	21	75	20	7	13	120.5	115
1/31	20	15	90	480	520	560	450.5	20	4.5	6	21	90	24	8.5	16	145.5	140
	1/4		25	170	190	210	195	10	2.5	6	11	25	7	4	7	54	45
	1/2	1/4	25	170	190	210	195	10	2.5	6	11	25	7	4	7	54	45
	1	1/2	35	200	225	250	247.5	12	3.5	6	13	35	10	4.5	8	65.5	60
	2	1	40	230	255	280	276.5	13	3.5	6	13	40	10	4.5	8	70.5	65
1/60	3	2	45	260	290	325	296.5	15	3.5	6	15	45	12	5.5	10	75.5	70
	5	3	50	290	320	350	332.5	15	4.5	6	15	50	12	5.5	10	85.5	80
	7-1/2	5	55	340	375	410	365.5	17	4.5	6	18	55	15	6.5	12	95.5	90
	10	7-1/2	65	380	420	460	392.5	18	4.5	6	18	65	18	6.5	12	105.5	100
	15	10	75	430	470	510	433.5	20	4.5	6	21	75	20	7	13	120.5	115
1/61	20	15	90	480	520	560	489.5	20	4.5	6	21	90	24	8.5	16	145.5	140
	1/4		25	170	190	210	195	10	2.5	6	11	25	7	4	7	54	45
	1/2	1/4	35	200	225	250	247.5	12	3.5	6	13	35	10	4.5	8	65.5	60
	1	1/2	40	230	255	280	276.5	13	3.5	6	13	40	10	4.5	8	70.5	65
	2	1	45	260	290	325	296.5	15	3.5	6	15	45	12	5.5	10	75.5	70
1/120	3	2	50	290	320	350	332.5	15	4.5	6	15	50	12	5.5	10	85.5	80
	5	3	55	340	375	410	365.5	17	4.5	6	18	55	15	6.5	12	95.5	90
	7-1/2	5	65	380	420	460	392.5	18	4.5	6	18	65	18	6.5	12	105.5	100
	10	7-1/2	75	430	470	510	433.5	20	4.5	6	21	75	20	7	13	120.5	115
	15	10	90	480	520	560	489.5	20	4.5	6	21	90	24	8.5	16	145.5	140





參 . 強力型減速馬達

## YGE2 型橫式齒輪馬達減速機 YGE2 Type Gear Motor Speed Reducer

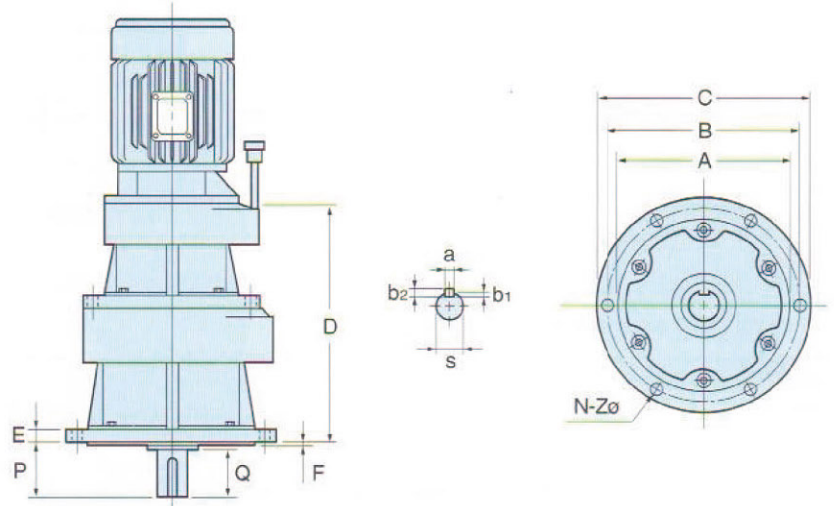


尺寸表 (MEASUREMENTS):

單位 (Unit) : m/m

減速比 Reducing Ratio	馬力 HP		型號 Mode YGE2	A	AG	B	C	D	L	E	G	F	LA	N	軸端 SHAFT END					
	4P	6P													s	a	b1	b2	p	Q
1/121	1/4-1/2	1/4	25-40	265	375	260	135	255	71	230	27	190	50	13	40	10	4.5	8	70.5	65
	1	1/2	30-45	290	423	295	155	290	75	240	28	220	50	15	45	12	5.5	10	75.5	70
	2	1	35-50	312	460	340	175	330	80	270	30	270	60	15	50	12	5.5	10	85.5	80
	3	2	40-55	360	512	390	205	380	106	300	32	310	78	18	55	15	6.5	12	95.5	90
	5	3	45-65	395	546	425	240	435	103	340	35	330	80	18	65	18	6.5	12	105.5	100
	7-1/2	5	50-75	445	591	480	265	485	112	380	38	370	80	21	75	20	7	13	120.5	115
	10	7-1/2	55-90	495	672	530	295	540	148	430	40	420	120	21	90	24	8.5	16	145.5	140
1/400	1/4-1/2	1/4	25-40	265	375	260	135	255	71	230	27	190	50	13	40	10	4.5	8	70.5	65
	1	1/2	35-50	312	482	340	175	330	80	270	30	270	60	15	50	12	5.5	10	85.5	80
	2	1	40-55	360	512	390	205	380	106	300	32	310	78	18	55	15	6.5	12	95.5	90
	3	2	45-65	395	546	425	240	435	103	340	35	330	80	18	65	18	6.5	12	105.5	100
	5	3	50-75	445	591	480	265	485	112	380	38	370	80	21	75	20	7	13	120.5	115
	7-1/2	5	55-90	495	672	530	295	540	148	430	40	420	120	21	90	24	8.5	16	145.5	140
	10	7-1/2	65-100	540	793	600	340	610	222	470	43	480	187	24	100	28	8.5	16	170.5	165
1/401	1/4-1/2	1/4	25-40	290	406	295	155	290	75	240	28	220	50	15	45	12	5.5	10	75.5	70
	1	1/2	35-50	312	482	340	175	330	80	270	30	270	60	15	50	12	5.5	10	85.5	80
	2	1	40-55	360	531	390	205	380	106	300	32	310	78	18	55	15	6.5	12	95.5	90
	3	2	45-65	395	571.5	425	240	435	103	340	35	330	80	18	65	18	6.5	12	105.5	100
	5	3	50-75	445	617	480	265	485	112	380	38	370	80	21	75	20	7	13	120.5	115
	7-1/2	5	55-90	495	692	530	295	540	148	430	40	420	120	21	90	24	8.5	16	145.5	140
	10	7-1/2	65-100	540	818	600	340	610	222	470	43	480	187	24	100	28	8.5	16	170.5	165
1/900	1/4-1/2	1/4	25-40	290	406	295	155	290	75	240	28	220	50	15	45	12	5.5	10	75.5	70
	1	1/2	35-50	312	482	340	175	330	80	270	30	270	60	15	50	12	5.5	10	85.5	80
	2	1	40-55	360	531	390	205	380	106	300	32	310	78	18	55	15	6.5	12	95.5	90
	3	2	45-65	395	571.5	425	240	435	103	340	35	330	80	18	65	18	6.5	12	105.5	100
	5	3	50-75	445	617	480	265	485	112	380	38	370	80	21	75	20	7	13	120.5	115
	7-1/2	5	55-90	495	692	530	295	540	148	430	40	420	120	21	90	24	8.5	16	145.5	140
	10	7-1/2	65-100	540	818	600	340	610	222	470	43	480	187	24	100	28	8.5	16	170.5	165
1/1800	1/4-1/2	1/4	25-40	290	406	295	155	290	75	240	28	220	50	15	45	12	5.5	10	75.5	70
	1	1/2	35-50	312	482	340	175	330	80	270	30	270	60	15	50	12	5.5	10	85.5	80
	2	1	40-55	360	531	390	205	380	106	300	32	310	78	18	55	15	6.5	12	95.5	90
	3	2	45-65	395	571.5	425	240	435	103	340	35	330	80	18	65	18	6.5	12	105.5	100
	5	3	50-75	445	617	480	265	485	112	380	38	370	80	21	75	20	7	13	120.5	115
	7-1/2	5	55-90	495	692	530	295	540	148	430	40	420	120	21	90	24	8.5	16	145.5	140
	10	7-1/2	65-100	540	818	600	340	610	222	470	43	480	187	24	100	28	8.5	16	170.5	165

## YGV2 型立式齒輪馬達減速機 YGV2 Type Gear Motor Speed Reducer



尺寸表 (MEASUREMENTS):

單位 (Unit) : m/m

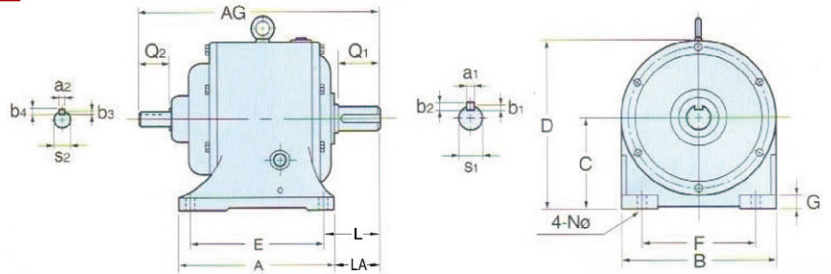
減速比 Reducing Ratio	馬力 HP		型號 Mode YGV2	A	B	C	D	E	F	N	Z	軸端 SHAFT END					
	4P	6P										S	A	B1	B2	P	Q
1/121	1/4-1/2	1/4	25-40	230	255	280	372	13	3.5	6	13	40	10	4.5	8	70.5	65
	1	1/2	30-45	260	290	325	418	15	3.5	6	15	45	12	5.5	10	75.5	70
	2	1	35-50	290	320	350	458	15	4.5	6	15	50	12	5.5	10	85.5	80
1/400	3	2	40-55	340	375	410	504	17	4.5	6	18	55	15	6.5	12	95.5	90
	5	3	45-65	380	420	460	540	18	4.5	6	18	65	18	6.5	12	105.5	100
	7-1/2	5	50-75	430	470	510	604	20	4.5	6	21	75	20	7	13	120.5	115
1/401	10	7-1/2	55-90	480	520	560	684	20	4.5	6	21	90	24	8.5	16	145.5	140
	1/4-1/2	1/4	25-40	230	255	280	372	13	3.5	6	13	40	10	4.5	8	70.5	65
	1	1/2	35-50	290	320	350	458	15	4.5	6	15	50	12	5.5	10	85.5	80
1/900	2	1	40-55	340	375	410	504	17	4.5	6	18	55	15	6.5	12	95.5	90
	3	2	45-65	380	420	460	540	18	4.5	6	18	65	18	6.5	12	105.5	100
	5	3	50-75	430	470	510	604	20	4.5	6	21	75	20	7	13	120.5	115
1/901	7-1/2	5	55-90	480	520	560	684	20	4.5	6	21	90	24	8.5	16	145.5	140
	1/4-1/2	1/4	25-40	260	290	325	405	15	3.5	6	15	45	12	5.5	10	75.5	70
	1	1/2	35-50	290	320	350	481	15	4.5	6	15	50	12	5.5	10	85.5	80
1/1800	2	1	40-55	340	375	410	523	17	4.5	6	18	55	15	6.5	12	95.5	90
	3	2	45-65	380	420	460	565.5	18	4.5	6	18	65	18	6.5	12	105.5	100
	5	3	50-75	430	470	510	630	20	4.5	6	21	75	20	7	13	120.5	115
	7-1/2	5	55-90	480	520	560	704	20	4.5	6	21	90	24	8.5	16	145.5	140





參. 強力型減速馬達

## YGW 型雙軸式齒輪馬達減速機 YGW Type Gear Motor Speed Reducer

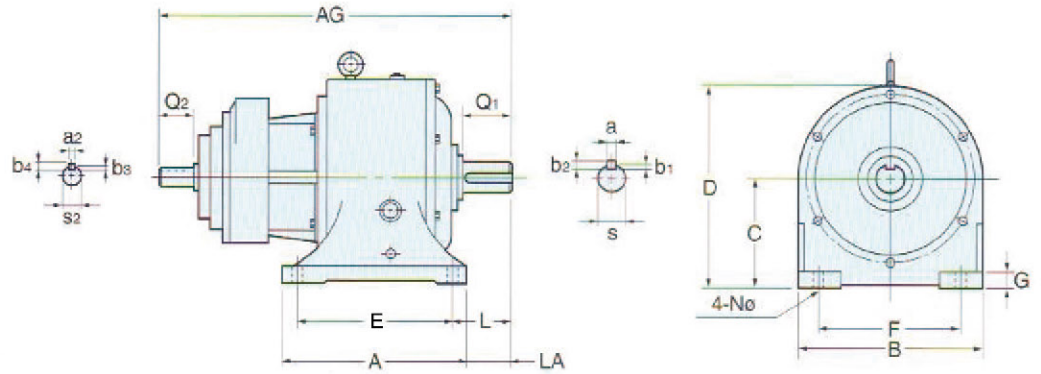


尺寸表 (MEASUREMENTS):

減速比 Reducing Ratio	馬力 HP		型號 Mode YGW	A	AG	B	C	D	L	E	G	F	LA	N	出力軸端 Output Shaft					入力軸端 Input Shaft				
	4P	6P													Q <sub>1</sub>	a <sub>1</sub>	b <sub>1</sub>	b <sub>2</sub>	S <sub>1</sub>	Q <sub>2</sub>	a <sub>2</sub>	b <sub>3</sub>	b <sub>4</sub>	S <sub>2</sub>
1/5	1/4		25	195	260	205	110	200	62	155	20	150	40	11	45	7	4	7	25	30	5	3	5	14
	1/2	1/4	25	195	260	205	110	200	62	155	20	150	40	11	45	7	4	7	25	30	5	3	5	14
	1	1/2	30	240	331.5	233	120	225	65	200	25	170	40	13	55	7	4	7	30	40	5	3	5	19
	2	1	35	240	336.5	233	120	225	65	200	25	170	45	13	60	10	4.5	8	35	40	5	3	5	19
	3	2	40	265	371	260	135	255	70	230	27	190	50	13	65	10	4.5	8	40	50	8	4	7	24
	5	3	45	284	387	295	155	290	75	240	28	220	50	15	70	12	5.5	10	45	50	8	4	7	24
	7-1/2	5	50	312	439	340	175	330	80	270	30	270	60	15	80	12	5.5	10	50	60	8	4	7	28
1/20	10	7-1/2	55	360	474	390	205	380	106	300	32	310	78	18	90	15	6.5	12	55	60	10	4.5	8	32
	15	10	65	395	508.5	425	240	435	103	340	35	330	80	18	100	18	6.5	12	65	60	10	4.5	8	32
	20	15	75	445	561	480	265	485	112	380	38	370	80	21	115	20	7	13	75	80	12	5.5	10	42
	30	20	90	495	631	530	295	540	148	430	40	420	120	21	140	24	8.5	16	90	80	12	5.5	10	42
	40	30	100	540	715	600	340	610	222	470	43	480	187	24	165	28	8.5	16	100	100	12	5.5	10	48
1/21	1/4		25	195	260	205	110	200	62	155	20	150	40	11	45	7	4	7	25	30	5	3	5	14
	1/2	1/4	25	195	260	205	110	200	62	155	20	150	40	11	45	7	4	7	25	30	5	3	5	14
	1	1/2	35	240	336.5	233	120	225	68	200	25	170	45	13	60	10	4.5	8	35	40	5	3	5	19
	2	1	40	265	371	265	135	255	71	230	27	190	50	13	65	10	4.5	8	40	50	8	4	7	24
	3	2	45	290	387	295	155	290	75	240	28	220	50	15	70	12	5.5	10	45	50	8	4	7	24
	5	3	50	312	439	340	175	330	80	270	30	270	60	15	80	12	5.5	10	50	60	8	4	7	28
	7-1/2	5	55	360	474	390	205	380	106	300	32	310	78	18	90	15	6.5	12	55	60	10	4.5	8	32
1/30	10	7-1/2	65	395	508.5	425	240	435	103	340	35	330	80	18	100	18	6.5	12	65	60	10	4.5	8	32
	15	10	75	445	561	480	265	485	112	380	38	370	80	21	115	20	7	13	75	80	12	5.5	10	42
	20	15	90	495	631	530	295	540	148	430	40	420	120	21	140	24	8.5	16	90	80	12	5.5	10	42
	30	20	100	540	715	600	340	610	222	470	43	480	187	24	165	28	8.5	16	100	100	12	5.5	10	48
	40	30	100	540	715	600	340	610	222	470	43	480	187	24	165	28	8.5	16	100	100	12	5.5	10	48
1/31	1/4		25	203	276	200	110	200	62	155	20	150	40	11	45	7	4	7	25	30	5	3	5	14
	1/2	1/4	25	203	276	200	110	200	62	155	20	150	40	11	45	7	4	7	25	30	5	3	5	14
	1	1/2	35	255	359.5	230	120	225	75	200	25	170	45	13	60	10	4.5	8	35	40	5	3	5	19
	2	1	40	273	390	265	135	255	73	230	27	190	50	13	65	10	4.5	8	40	50	8	4	7	24
	3	2	45	290	413	295	155	290	75	240	28	220	50	15	70	12	5.5	10	45	50	8	4	7	24
	5	3	50	333	464	340	175	330	91	270	30	270	60	15	80	12	5.5	10	50	60	8	4	7	28
	7-1/2	5	55	364	495	390	205	389	95	300	32	310	74	18	90	15	6.5	12	55	60	10	4.5	8	32
1/60	10	7-1/2	65	395	554.5	425	240	435	103	340	35	330	80	18	100	18	6.5	12	65	60	10	4.5	8	32
	15	10	75	445	594	480	265	485	112	380	38	370	80	21	115	20	7	13	75	80	12	5.5	10	42
	20	15	90	495	671	535	295	540	148	430	40	420	120	21	140	24	8.5	16	90	80	12	5.5	10	42
	30	20	100	540	750	600	340	610	222	470	43	480	187	24	165	28	8.5	16	100	100	12	5.5	10	48
	40	30	100	540	750	600	340	610	222	470	43	480	187	24	165	28	8.5	16	100	100	12	5.5	10	48
1/61	1/4		25	203	276	200	110	200	62	155	20	150	40	11	45	7	4	7	25	30	5	3	5	14
	1/2	1/4	35	258	359.5	230	120	225	75	200	25	170	45	13	60	10	4.5	8	35	40	5	3	5	19
	1	1/2	40	273	390	265	135	255	71	230	27	190	50	13	65	10	4.5	8	40	50	8	4	7	24
	2	1	45	290	413	295	155	290	75	240	28	220	50	15	70	12	5.5	10	45	50	8	4	7	24
	3	2	50	333	464	340	175	330	91	270	30	270	60	15	80	12	5.5	10	50	60	8	4	7	28
	5	3	55	360	495	390	205	389	95	300	32	310	78	18	90	15	6.5	12	55	60	10	4.5	8	32
	7-1/2	5	65	395	554.5	425	240	435	103	340	35	330	80	18	100	18	6.5	12	65	60	10	4.5	8	32
1/120	10	7-1/2	75	445	594	480	265	485	112	380	38	370	80	21	115	20	7	13	75	80	12	5.5	10	42
	15	10	90	495	671	535	295	540	148	430	40	420	120	21	140	24	8.5	16	90	80	12	5.5	10	42
	20	15	100	540	750	600	340	610	222	470	43	480	187	24	165	28	8.5	16	100	100	12	5.5	10	48
	30	20	100	540	750	600	340	610	222	470	43	480	187	24	165	28	8.5	16	100	100	12	5.5	10	48
	40	30	100	540	750	600	340	610	222	470	43	480	187	24	165	28	8.5	16	100	100	12	5.5	10	48

單位 (Unit) : m/m

## YGW2 型雙軸式齒輪馬達減速機 YGW2 Type Gear Motor Speed Reducer



尺寸表 (MEASUREMENTS) :

單位 (Unit) : m/m

減速比 Reducing Ratio	馬力 HP		型號 Mode YGW2	A	AG	B	C	D	L	E	G	F	LA	N	出力軸端 Output Shaft					入力軸端 Input Shaft				
	4P	6P													Q <sub>1</sub>	a1	b1	b2	S <sub>1</sub>	Q <sub>2</sub>	a2	b3	b4	S <sub>2</sub>
1/121	1/4-1/2	1/4	25-40	260	464	265	135	255	71	230	27	190	50	13	65	10	4.5	8	40	30	5	3	5	14
	1	1/2	30-45	290	537.5	295	155	290	75	240	28	220	50	15	70	12	5.5	10	45	40	5	3	5	19
	2	1	35-50	312	574.5	340	175	330	80	270	30	270	60	15	80	12	5.5	10	50	40	5	3	5	19
	3	2	40-55	360	635	390	205	380	106	300	32	310	78	18	90	15	6.5	12	55	50	8	4	7	24
1/400	5	3	45-65	395	668	425	240	435	103	340	35	330	80	18	100	18	6.5	12	65	50	8	4	7	24
	7-1/2	5	50-75	445	729	480	265	485	112	380	38	370	80	21	115	20	7	13	75	60	8	4	7	28
	10	7-1/2	55-90	495	808	530	295	540	148	430	40	420	120	21	140	24	8.5	16	90	60	10	4.5	8	32
1/901	15	10	65-100	540	940.5	600	340	610	222	470	43	480	187	24	165	28	8.5	16	100	60	10	4.5	8	32
	1/4-1/2	1/4	25-40	260	464	265	135	255	71	230	27	190	50	13	65	10	4.5	8	40	30	5	3	5	14
	1	1/2	35-50	312	596.5	340	175	330	80	270	30	270	60	15	80	12	5.5	10	50	40	5	3	5	19
	2	1	40-55	360	635	390	205	380	106	300	32	310	78	18	90	15	6.5	12	55	50	8	4	7	24
	3	2	45-65	395	668	425	240	435	103	340	35	330	80	18	100	18	6.5	12	65	50	8	4	7	24
	5	3	50-75	445	729	480	265	485	112	380	38	370	80	21	115	20	7	13	75	60	8	4	7	28
1/1800	7-1/2	5	55-90	495	808	530	295	540	148	430	40	420	120	21	140	24	8.5	16	90	60	10	4.5	8	32
	10	7-1/2	65-100	540	940.5	600	340	610	222	470	43	480	187	24	165	28	8.5	16	100	60	10	4.5	8	32
	1/4-1/2	1/4	25-40	290	495	295	155	290	75	240	28	220	50	15	70	12	5.5	10	45	30	5	3	5	14
	1	1/2	35-50	312	596.5	340	175	330	80	270	30	270	60	15	80	12	5.5	10	50	40	5	3	5	19
	2	1	40-55	360	654	390	205	380	106	300	32	310	78	18	90	15	6.5	12	55	50	8	4	7	24
	3	2	45-65	395	693.5	425	240	435	103	340	35	330	80	18	100	18	6.5	12	65	50	8	4	7	24